



# DHHC-7 Polyclonal Antibody

<b>Catalog No</b>	YP-Ab-01652
<b>Isotype</b>	IgG
<b>Reactivity</b>	Human;Rat;Mouse;
<b>Applications</b>	WB;ELISA
<b>Gene Name</b>	ZDHHC7
<b>Protein Name</b>	Palmitoyltransferase ZDHHC7
<b>Immunogen</b>	The antiserum was produced against synthesized peptide derived from human ZDHHC7. AA range:259-308
<b>Specificity</b>	DHHC-7 Polyclonal Antibody detects endogenous levels of DHHC-7 protein.
<b>Formulation</b>	Liquid in PBS containing 50% glycerol, 0.5% BSA and 0.02% sodium azide.
<b>Source</b>	Polyclonal, Rabbit,IgG
<b>Purification</b>	The antibody was affinity-purified from rabbit antiserum by affinity-chromatography using epitope-specific immunogen.
<b>Dilution</b>	Western Blot: 1/500 - 1/2000. ELISA: 1/40000. Not yet tested in other applications.
<b>Concentration</b>	1 mg/ml
<b>Purity</b>	≥90%
<b>Storage Stability</b>	-20°C/1 year
<b>Synonyms</b>	ZDHHC7; ZNF370; Palmitoyltransferase ZDHHC7; Zinc finger DHHC domain-containing protein 7; DHHC-7; Zinc finger protein 370
<b>Observed Band</b>	35kD
<b>Cell Pathway</b>	Golgi apparatus membrane ; Multi-pass membrane protein .
<b>Tissue Specificity</b>	Duodenal mucosa,Hepatoma,Skin,Teratocarcinoma,
<b>Function</b>	catalytic activity:Palmitoyl-CoA + protein-cysteine = S-palmitoyl protein + CoA.,domain:The DHHC domain is required for palmitoyltransferase activity.,function:Palmitoyltransferase with broad specificity. Palmitoylates SNAP25 and DLG4/PSD95. May palmitoylate GABA receptors on their gamma subunit (GABRG1, GABRG2 and GABRG3) and regulate their synaptic clustering and/or cell surface stability.,similarity:Belongs to the DHHC palmitoyltransferase family.,similarity:Contains 1 DHHC-type zinc finger.,
<b>Background</b>	catalytic activity:Palmitoyl-CoA + protein-cysteine = S-palmitoyl protein + CoA.,domain:The DHHC domain is required for palmitoyltransferase activity.,function:Palmitoyltransferase with broad specificity. Palmitoylates SNAP25 and DLG4/PSD95. May palmitoylate GABA receptors on their gamma subunit (GABRG1, GABRG2 and GABRG3) and regulate their synaptic clustering and/or cell surface stability.,similarity:Belongs to the DHHC palmitoyltransferase



family.,similarity:Contains 1 DHHC-type zinc finger.,

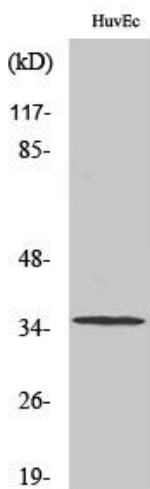
**matters needing attention**

Avoid repeated freezing and thawing!

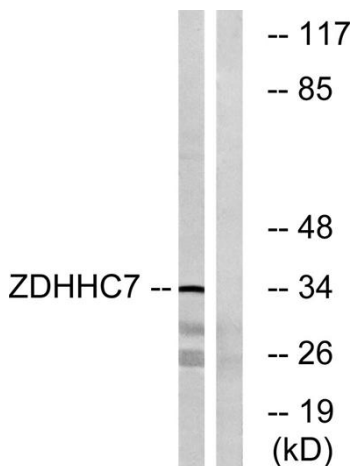
**Usage suggestions**

This product can be used in immunological reaction related experiments. For more information, please consult technical personnel.

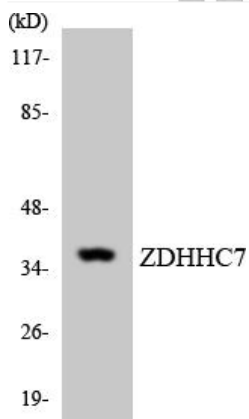
**Products Images**



Western Blot analysis of various cells using DHHC-7 Polyclonal Antibody



Western blot analysis of lysates from HUVEC cells, using ZDHHC7 Antibody. The lane on the right is blocked with the synthesized peptide.



Western blot analysis of the lysates from HUVEC cells using ZDHHC7 antibody.